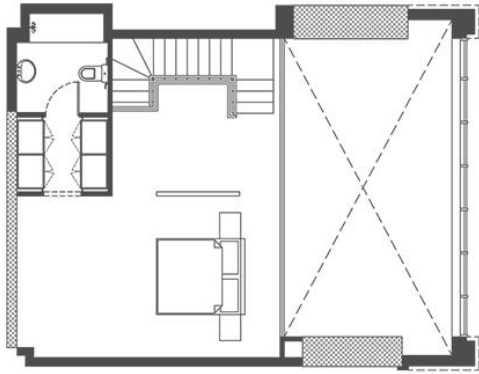


1 bedroom

Type 1B

Palm Jumeirah View

1,406 sq ft



Upper level

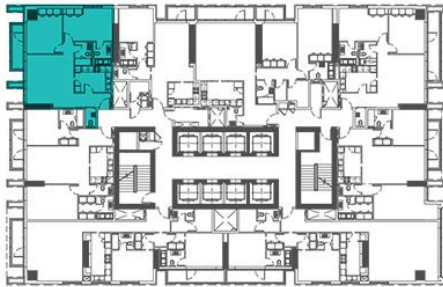
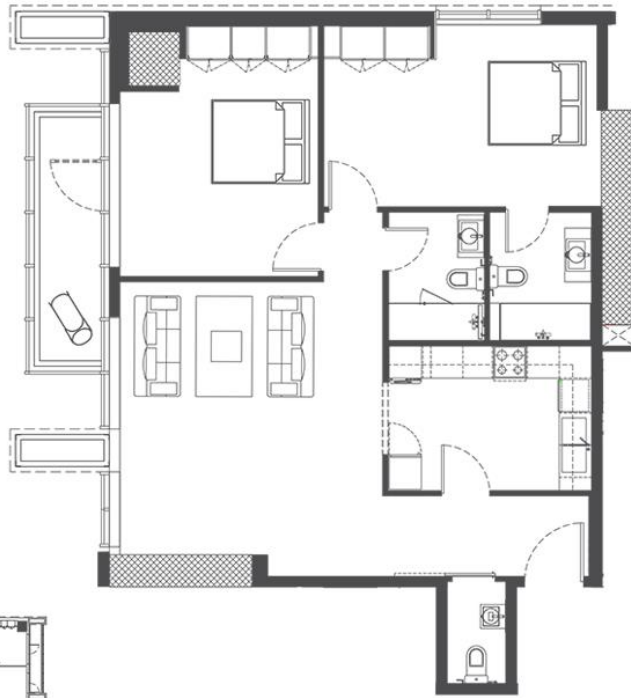


Lower level



2 bedroom
Type 2A

Dubai Marina
& Al Seef View
1,116 sq ft interior
76 sq ft terrace



3 bedroom

Type 3C

Al Seef View

2,132 sq ft



4 bedroom
Type 4A

Palm Jumeirah, Marina
23 & Al Seef Views

3,754 sq ft interior
1,829 sq ft terrace

