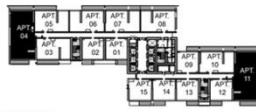
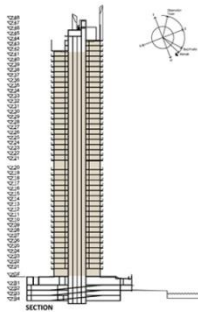


# PALACE RESIDENCES DUBAI CREEK HARBOUR

## 3 BEDROOM

LEVEL 1 TO 43

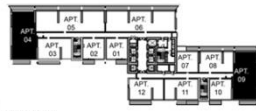
LEVEL	UNIT NO	UNIT AREA		BALCONY AREA		TOTAL AREA	
		SQM.	SQFT.	SQM.	SQFT.	SQM.	SQFT.
TYPICAL 1-19	UNIT 04	143.19	1541.28	25.07	269.85	168.26	1811.13
	UNIT 11	140.61	1513.51	24.24	260.92	164.85	1774.43
TYPICAL 21-39	UNIT 04	143.19	1541.28	25.07	269.85	168.26	1811.13
	UNIT 11	140.61	1513.51	24.22	260.70	164.83	1774.21
TYPICAL 40-41	UNIT 04	143.19	1541.28	25.04	269.53	168.23	1810.81
	UNIT 09	140.61	1513.51	24.11	259.52	164.72	1773.03
TYPICAL 42-43	UNIT 04	143.21	1541.50	25.04	269.53	168.25	1811.03



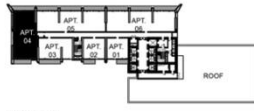
KEY PLAN 1-19



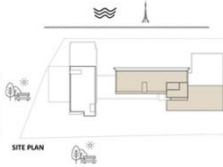
KEY PLAN 21-39



KEY PLAN 40-41



KEY PLAN 42-43



SITE PLAN

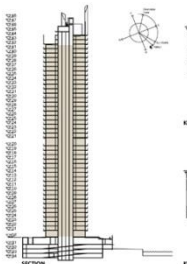


# PALACE RESIDENCES DUBAI CREEK HARBOUR

## 2 BEDROOM - TYPE A

LEVEL 1 TO 43

LEVEL	UNIT NO	UNIT AREA		BALCONY AREA		TOTAL AREA	
		SQM.	SQFT.	SQM.	SQFT.	SQM.	SQFT.
TYPICAL 1-19	UNIT 03	88.39	951.42	13.77	148.22	102.16	1099.64
	UNIT 05	87.74	944.43	13.84	148.97	101.58	1093.40
	UNIT 06	88.56	953.25	13.84	148.97	102.40	1102.22
TYPICAL 21-39	UNIT 03	88.39	951.42	13.77	148.22	102.16	1099.64
	UNIT 05	87.74	944.43	13.84	148.97	101.58	1093.40
	UNIT 06	88.56	953.25	13.84	148.97	102.40	1102.22
TYPICAL 40-41	UNIT 11	88.30	950.45	13.43	144.56	101.73	1095.01
	UNIT 14	88.86	956.48	13.43	144.56	102.29	1101.04
	UNIT 03	88.39	951.42	13.66	147.04	102.05	1098.46
TYPICAL 42-43	UNIT 11	88.30	950.45	13.43	144.56	101.73	1095.01
	UNIT 12	88.86	956.48	13.43	144.56	102.29	1101.04
TYPICAL 42-43	UNIT 03	88.39	951.42	13.66	147.04	102.05	1098.46



KEY PLAN 1-19



KEY PLAN 21-39



KEY PLAN 40-41



KEY PLAN 42-43



# PALACE RESIDENCES DUBAI CREEK HARBOUR

## I BEDROOM

LEVEL I TO 43

LEVEL	UNIT NO	UNIT AREA		BALCONY AREA		TOTAL AREA	
		SQM.	SQFT.	SQM.	SQFT.	SQM.	SQFT.
TYPICAL 1-19	UNIT 01	57.59	619.89	7.08	76.21	64.67	696.10
	UNIT 02	57.53	619.25	7.52	80.94	65.05	700.19
	UNIT 09	56.87	612.14	7.81	84.07	64.68	696.21
	UNIT 12	57.91	623.34	7.57	81.48	65.48	704.82
	UNIT 13	57.75	621.62	7.59	81.70	65.34	703.32
TYPICAL 21-39	UNIT 14	58.22	626.67	7.59	81.70	65.81	708.37
	UNIT 15	58.32	627.75	7.59	81.70	65.91	709.45
	UNIT 01	57.59	619.89	7.08	76.21	64.67	696.10
	UNIT 02	57.53	619.25	7.52	80.94	65.05	700.19
	UNIT 09	56.87	612.14	7.81	84.07	64.68	696.21
TYPICAL 40-41	UNIT 12	57.92	623.45	7.57	81.48	65.49	704.93
	UNIT 01	57.59	619.89	7.08	76.21	64.67	696.10
	UNIT 02	57.53	619.25	7.52	80.94	65.05	700.19
	UNIT 07	56.87	612.14	7.81	84.07	64.68	696.21
TYPICAL 42-43	UNIT 10	57.92	623.45	7.57	81.48	65.49	704.93
	UNIT 01	57.59	619.89	7.08	76.21	64.67	696.10
	UNIT 02	57.53	619.25	7.52	80.94	65.05	700.19

