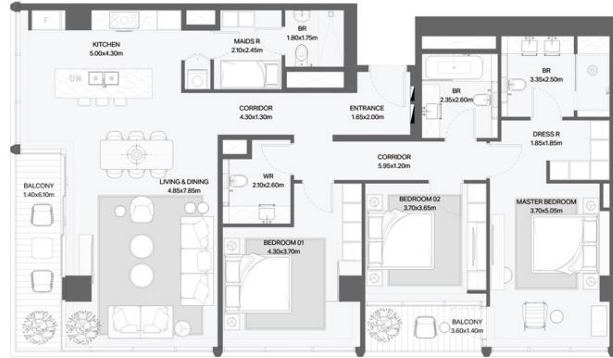
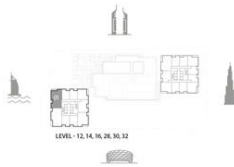


3 BEDROOM TYPE A1

VERVE
CITY WALK

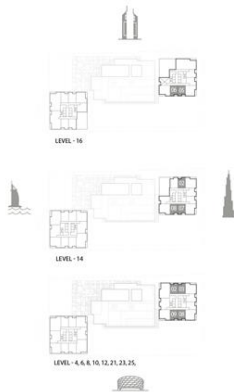


| UNIT NUMBER | Suite Area N/A | | Balcony Area | | Total Area NSA | |
|----------------------------------|----------------|---------|--------------|--------|----------------|---------|
| | SQM | SQFT | SQM | SQFT | SQM | SQFT |
| 3201 | 168.57 | 1814.47 | 14.10 | 151.77 | 182.67 | 1966.24 |
| 1201 1401 1601 2801 3001 | 168.99 | 1814.47 | 14.1 | 151.77 | 183.09 | 1970.76 |

MERAAS

1 BEDROOM TYPE A1

VERVE
CITY WALK

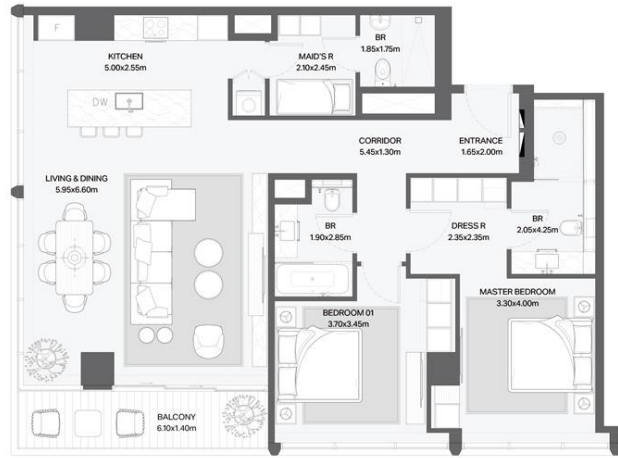
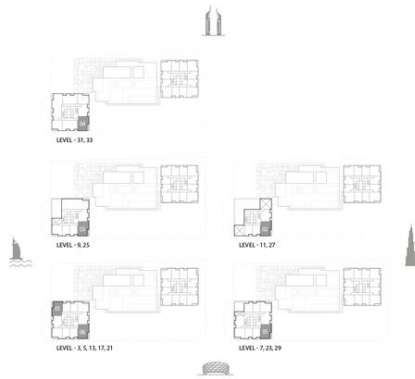


| UNIT NUMBER | Suite Area N/A | | Balcony Area | | Total Area NSA | |
|--|----------------|--------|--------------|-------|----------------|--------|
| | SQM | SQFT | SQM | SQFT | SQM | SQFT |
| 402 408 602 608 802 808 1002 1008 1202 1208 1407 1605 2102 2108 2302 2502 | 71.93 | 774.25 | 5.48 | 58.99 | 77.41 | 833.23 |
| 403 409 603 609 803 809 1003 1009 1203 1209 1402 1408 1606 2103 2109 2303 2503 | 72 | 775.00 | 5.48 | 58.99 | 77.48 | 833.99 |

MERAAS

2 BEDROOM TYPE A1

VERVE
CITY WALK

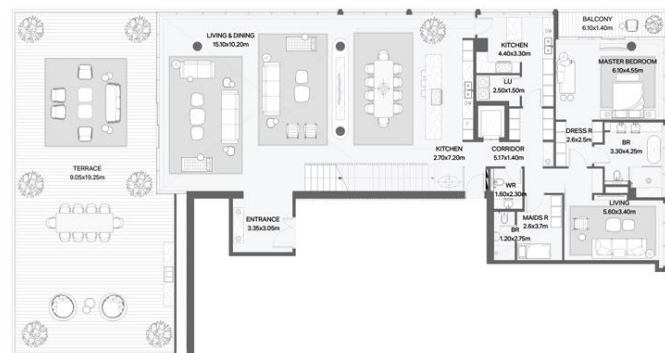
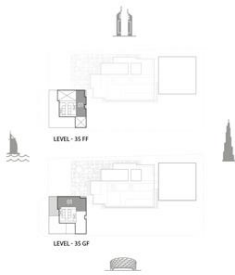


| UNIT NUMBER | Suite Area N/A | | Balcony Area | | Total Area NSA | |
|--|----------------|---------|--------------|-------|----------------|---------|
| | SQM | SQFT | SQM | SQFT | SQM | SQFT |
| 903 1102 2305 | 131.62 | 1416.75 | 8.67 | 93.32 | 140.29 | 1510.07 |
| 301 306 501 506 705 1306 1701 2106 2503 2702 2905 3104 3304 | 131.63 | 1416.85 | 8.67 | 93.32 | 140.30 | 1510.18 |

||| MERAAS

PENTHOUSE LOWER LEVEL

VERVE
CITY WALK



| UNIT NUMBER | Suite Area N/A | | Balcony Area | | Total Area NSA | |
|-------------|----------------|---------|--------------|---------|----------------|---------|
| | SQM | SQFT | SQM | SQFT | SQM | SQFT |
| 3501 | 670.22 | 7214.19 | 187.01 | 2012.96 | 857.23 | 9227.15 |

||| MERAAS