

UNIT - B3602

4BHK

LEVEL : THIRTY SIX FLOOR	
UNIT NO : B3602	
SUITE AREA :	2231.68 Sq.ft
BALCONY AREA :	699.98 Sq.ft
TOTAL AREA :	2931.66 Sq.ft



ROAD

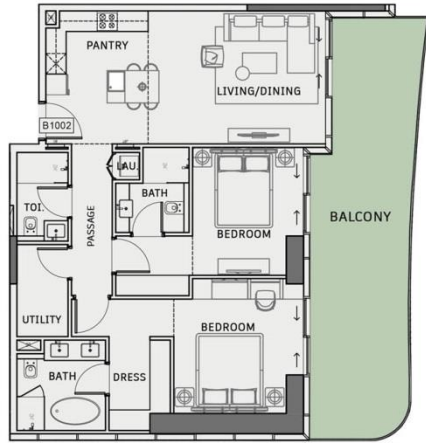
ROAD

ROAD

Disclaimer: all pictures, plans, layouts, information, data and details included in this brochure are indicative only and may change at any time up to the final 'as built' status in accordance with the final designs of the project, regulatory approvals and planning permissions.

ONE SKY PARK

BY IMAN



UNIT - B1002

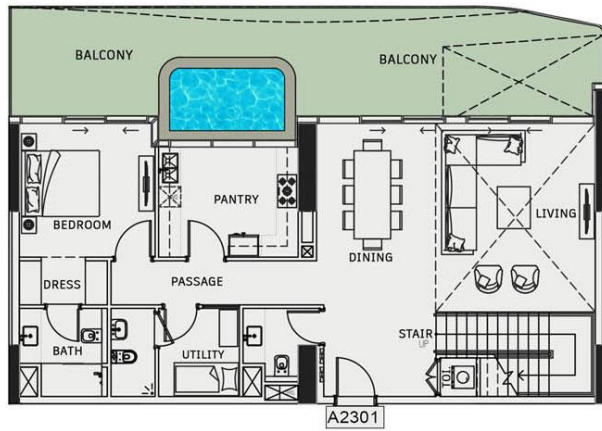
2BHK

LEVEL : TENTH FLOOR	
UNIT NO : B1002	
SUITE AREA :	1127.30 Sq.ft
BALCONY AREA :	406.98 Sq.ft
TOTAL AREA :	1534.29 Sq.ft

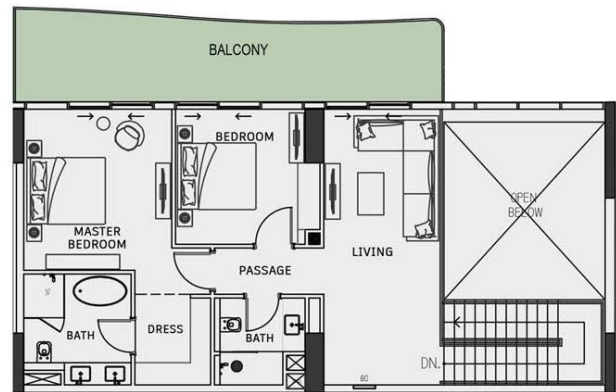


Disclaimer: all pictures, plans, layouts, information, data and details included in this brochure are indicative only and may change at any time up to the final 'as built' status in accordance with the final designs of the project, regulatory approvals and planning permissions.

ONE
SKY PARK
BY IMAN



LOWER FLOOR



UPPER FLOOR

UNIT - A2301



3BHK (DX)



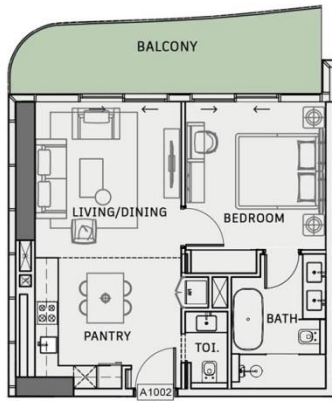
ROAD

LEVEL : TWENTY THREE FLOOR	
UNIT NO : A2301	
SUITE AREA :	2372.26 Sq.ft
BALCONY AREA :	844.21 Sq.ft
TOTAL AREA :	3216.47 Sq.ft

Disclaimer: all pictures, plans, layouts, information, data and details included in this brochure are indicative only and may change at any time up to the final 'as built' status in accordance with the final designs of the project, regulatory approvals and planning permissions.

ONE
SKY PARK

BY IMAN



UNIT - A1002

1BHK

LEVEL : TENTH FLOOR	
UNIT NO : A1002	
SUITE AREA :	640.99 Sq.ft
BALCONY AREA :	176.85 Sq.ft
TOTAL AREA :	817.84 Sq.ft



Disclaimer: all pictures, plans, layouts, information, data and details included in this brochure are indicative only and may change at any time up to the final 'as built' status in accordance with the final designs of the project, regulatory approvals and planning permissions.

ONE
SKY PARK
BY IMAN



UNIT - A1001

STUDIO

LEVEL : TENTH FLOOR	
UNIT NO : A1001	
SUITE AREA :	395.47 Sq.ft
BALCONY AREA :	82.24 Sq.ft
TOTAL AREA :	477.70 Sq.ft



Disclaimer: all pictures, plans, layouts, information, data and details included in this brochure are indicative only and may change at any time up to the final 'as built' status in accordance with the final designs of the project, regulatory approvals and planning permissions.

ONE
SKY PARK
BY IMAN