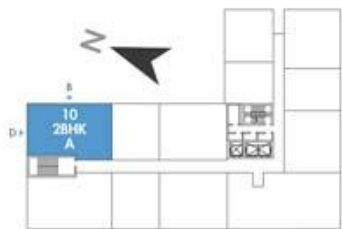


2-BEDROOM TYPE A

SEASIDE

BY PRESTIGE ONE



3rd, 5th, 7th & 9th FLOORS



ELEVATION B



ELEVATION D

APARTMENT AREA
1346.00 SQ.FT.

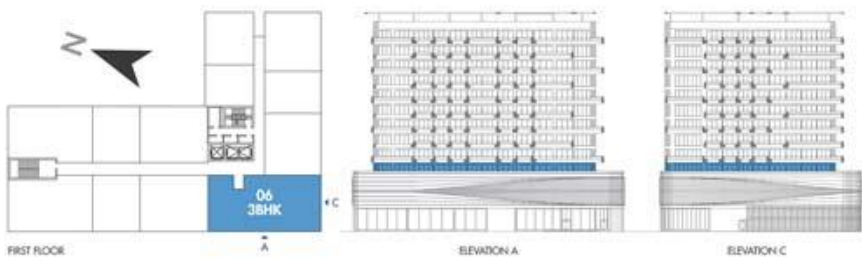
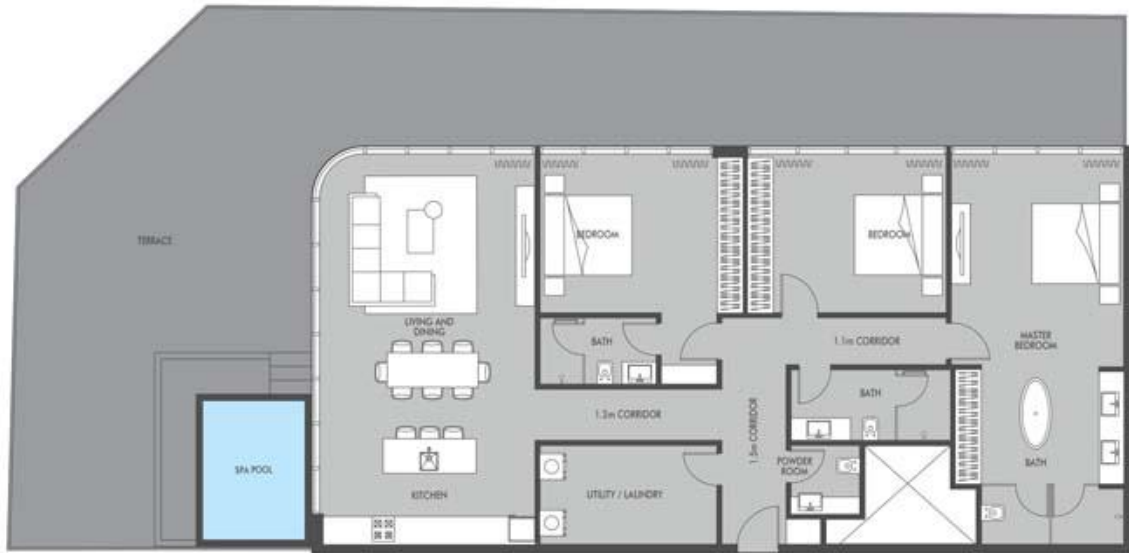
TERRACE AREA
215.30 SQ.FT.

TOTAL AREA
1561.30 SQ.FT.

3-BEDROOM

SEASIDE

BY PRESTIGE ONE



APARTMENT AREA
1829.80 SQ.FT.

TERRACE AREA
1474.70 SQ.FT.

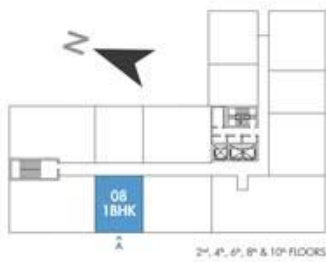
TOTAL AREA
3304.50 SQ.FT.



1-BEDROOM

SEASIDE

BY PRESTIGE ONE



APARTMENT AREA
775.00 SQ.FT.

TERRACE AREA
86.10 SQ.FT.

TOTAL AREA
861.10 SQ.FT.

