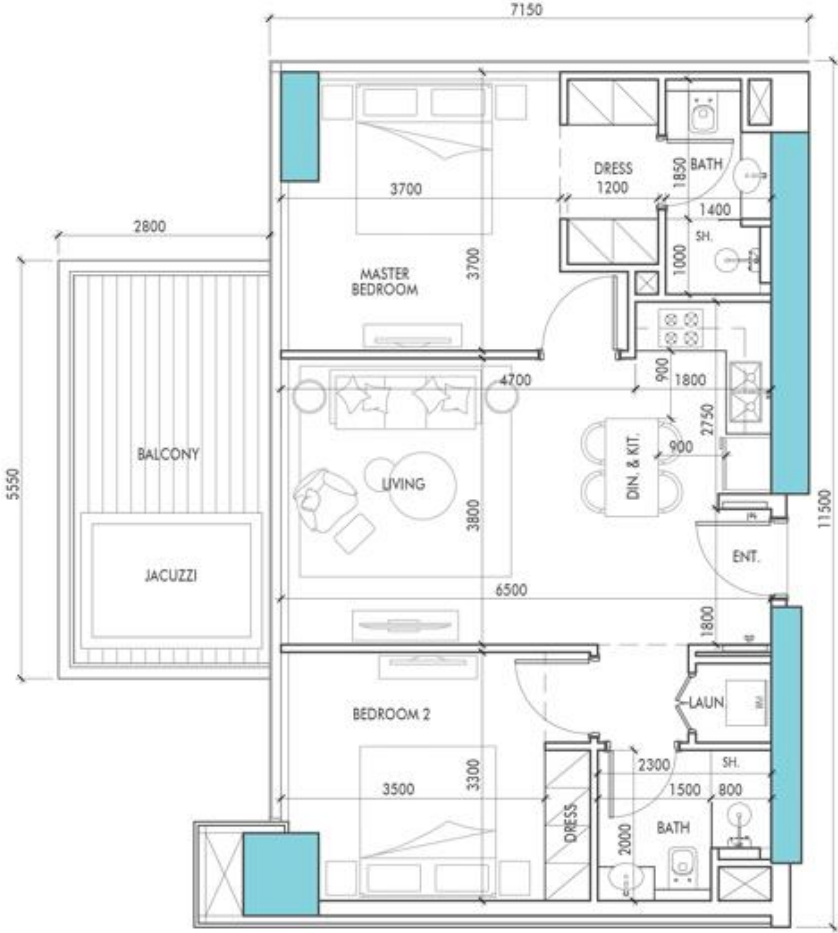


2-BEDROOM TYPE A



APARTMENT AREA - 75.67 M²
BALCONY AREA - 13.71 M²
TOTAL AREA - 89.38 M²

1-BEDROOM TYPE A



APARTMENT AREA - 47.44 M²
BALCONY AREA - 12.36 M²
TOTAL AREA - 59.8 M²