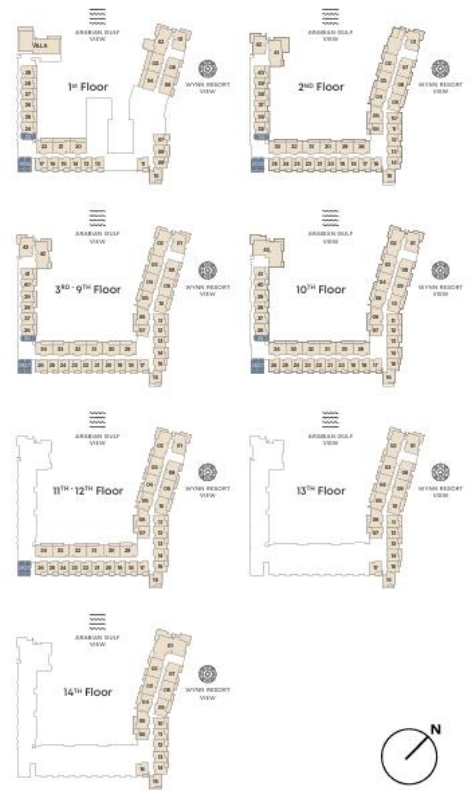


STUDIO TYPE A



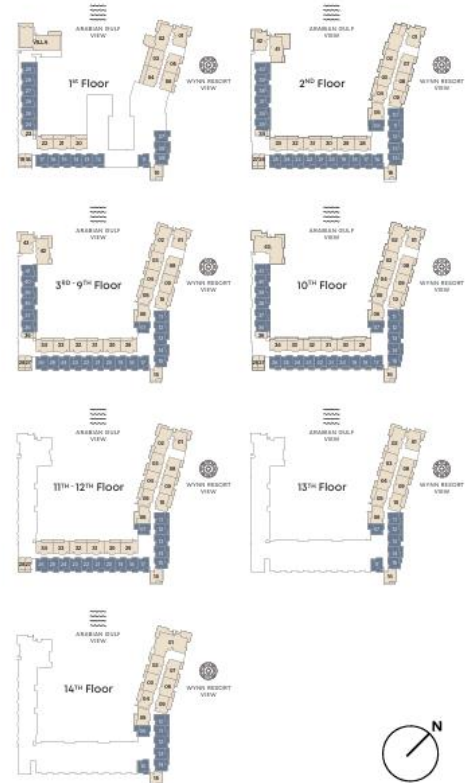
INTERNAL LIVING AREA	339.82 SQ. FT
OUTDOOR LIVING AREA	70.72 SQ. FT
TOTAL LIVING AREA	410.54 SQ. FT



1-BEDROOM TYPE A



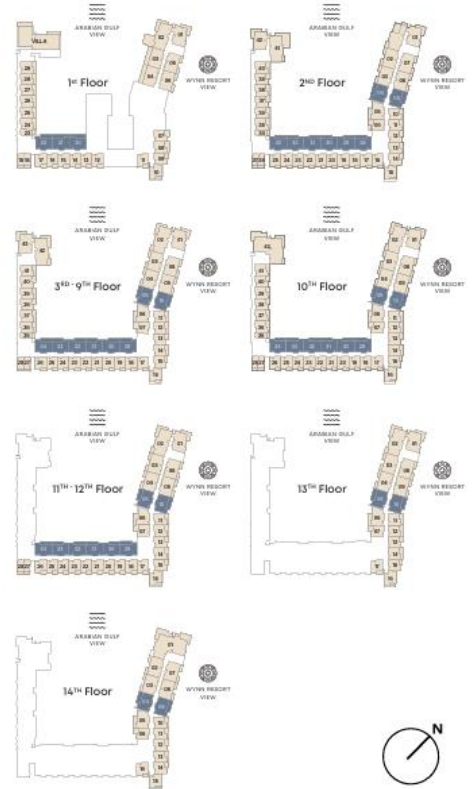
INTERNAL LIVING AREA	614.73 SQ. FT
OUTDOOR LIVING AREA	87.94 SQ. FT
TOTAL LIVING AREA	702.67 SQ. FT



2-BEDROOM TYPE A



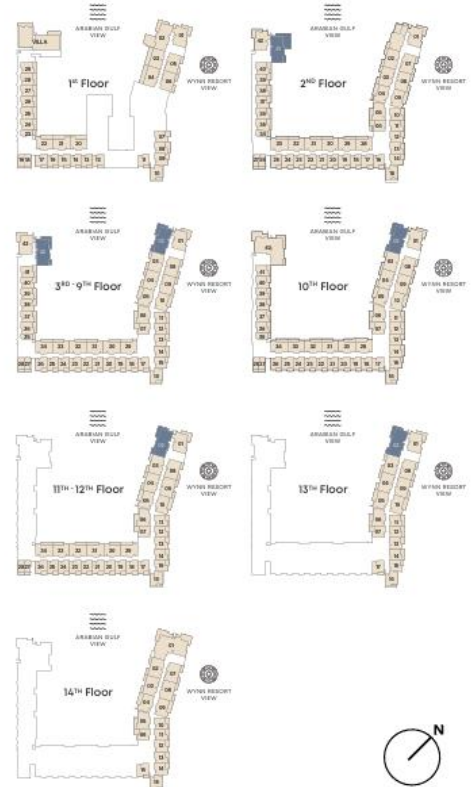
INTERNAL LIVING AREA	905.68 SQ. FT.
OUTDOOR LIVING AREA	168.24 SQ. FT.
TOTAL LIVING AREA	1073.92 SQ. FT.



3-BEDROOM TYPE A



INTERNAL LIVING AREA	1549.57 SQ. FT.
OUTDOOR LIVING AREA	356.93 SQ. FT.
TOTAL LIVING AREA	1906.50 SQ. FT.

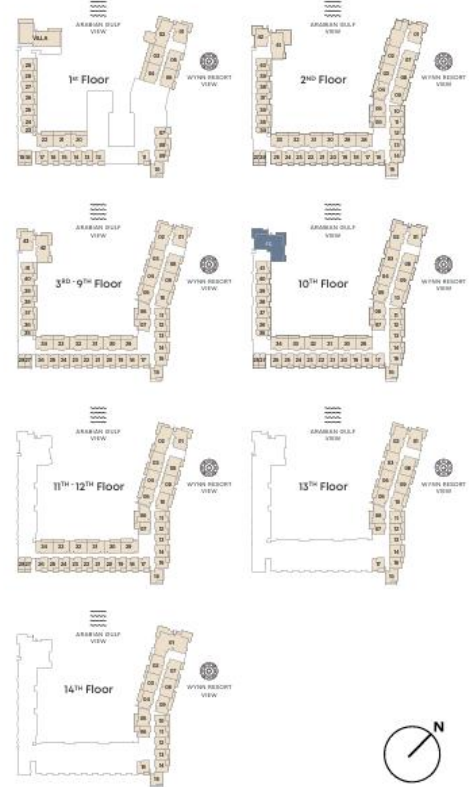


PENTHOUSE

TYPE A

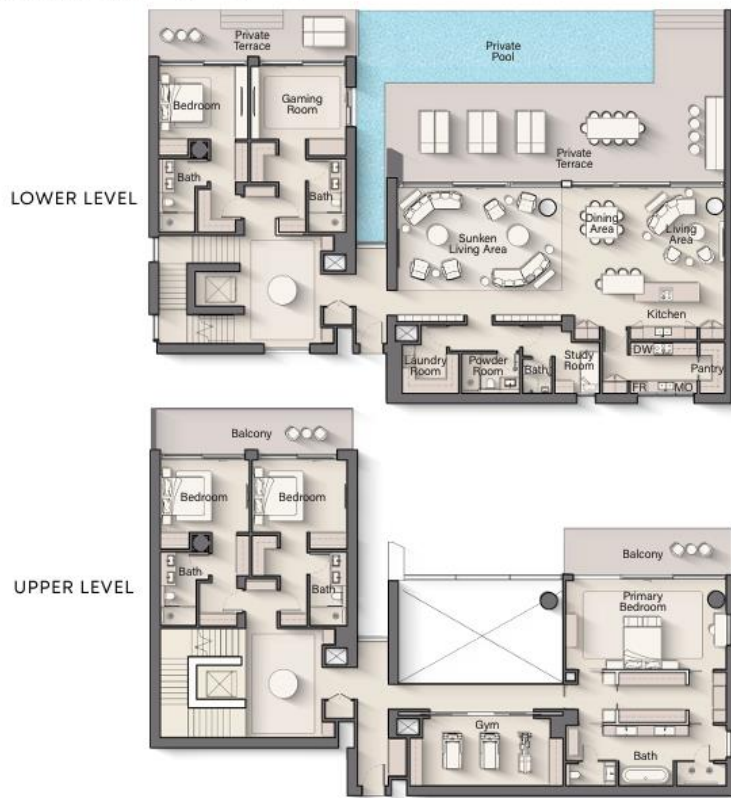


INTERNAL LIVING AREA	2771.81 SQ. FT
OUTDOOR LIVING AREA	778.55 SQ. FT
TOTAL LIVING AREA	3550.37 SQ. FT



THE VILLA

5 Bedroom - B + G + 1



INTERNAL LIVING AREA	6392.15 SQ. FT
OUTDOOR LIVING AREA	2281.63 SQ. FT
TOTAL LIVING AREA	8673.77 SQ. FT

